

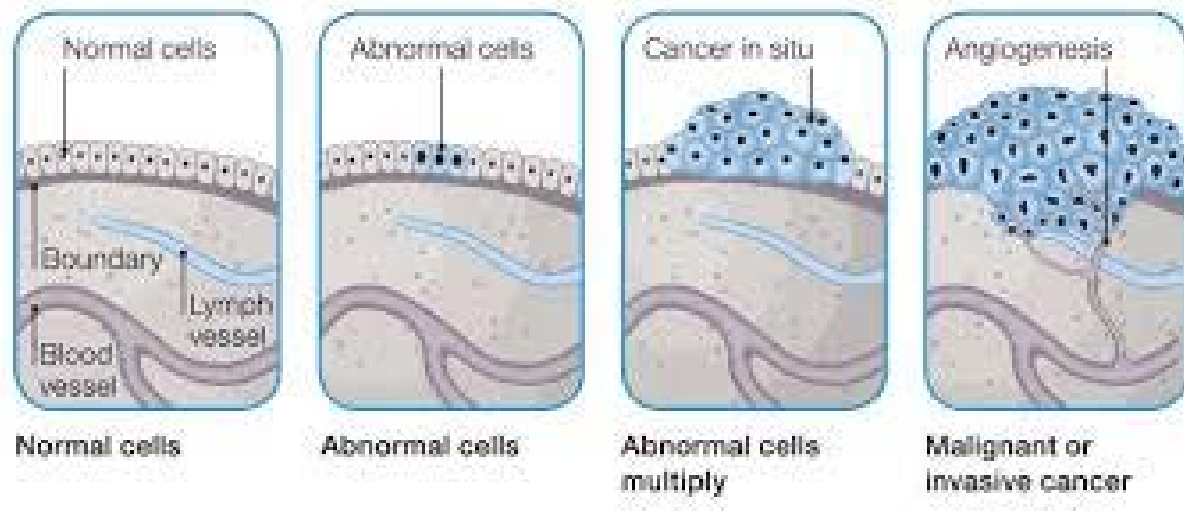
Patient care

Education for Solaris Volunteers

Lisa Braby A/SDN G73

What is cancer?

- 5th century Hippocrates noted the 8 prongs of tumour- like a crab “Karkinos”. No wonder cancer makes people crabby
- Millions of cells dividing at any given time
- Cancer is when there is uncontrolled division of abnormal cells
- Malignant
- Benign



Cancer on G73

- Radiation Oncology
- Medical oncology
- Haematology



Our patients

- Our patients are amazing, inspiring, resilient people
- Majority are switched on and informed of their treatment and side effects
- Majority of the time, extremely unwell patients will not be leaving the ward.

What is Chemotherapy?

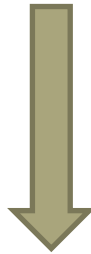
- “Head to toe mouth wash”
- Systematic- moves through all parts of the body
- People can fear chemotherapy as much as cancer
- It is powerful- it has to stop the disease that kills so many Australians a day
- Chemo cycles- based on age, health, cancer, drugs, response
- “Around 19,000 more people die each year from cancer than 30 years ago, this is due mainly to population growth and aging. However, the death rate (number of deaths per 100,000 people) has fallen by more than 16%.”
(www.cancer.org.au)

Side effects of chemotherapy

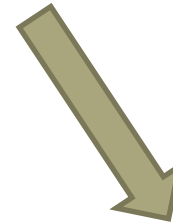
Pancytopenia



Anaemia
(Low red cells)



Thrombocytopenia
(Low platelets)



Neutropenia
(low white cells, neutrophils)

Head to toe side effects

- Hair loss
- Chemo brain
- Itchy eyes
- Taste changes
- Mucositis, oesophagitis, colitis
- Shortness of breath
- Nausea and vomiting
- Diarrhoea and constipation
- Infertility
- Neuropathy
- Pain
- Depression

Excretion

- Chemotherapy is eliminated via bodily fluids
- Majority through urine

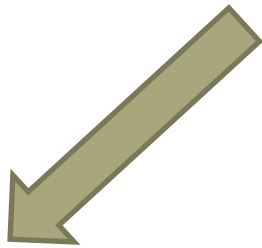
How do we give Chemo?

- Oral
- Subcutaneous
- Intravenous – IVC, CVAD

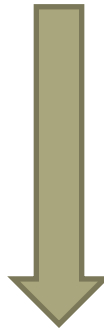


CVADs

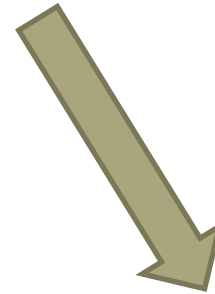
Central Venous Access Devices



PICCs



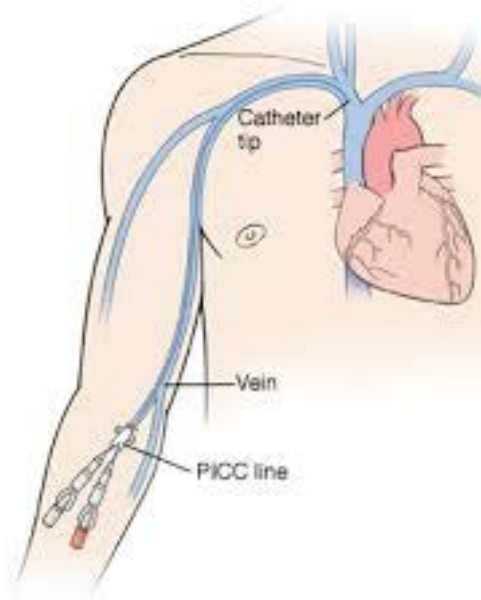
CVCs



PORT

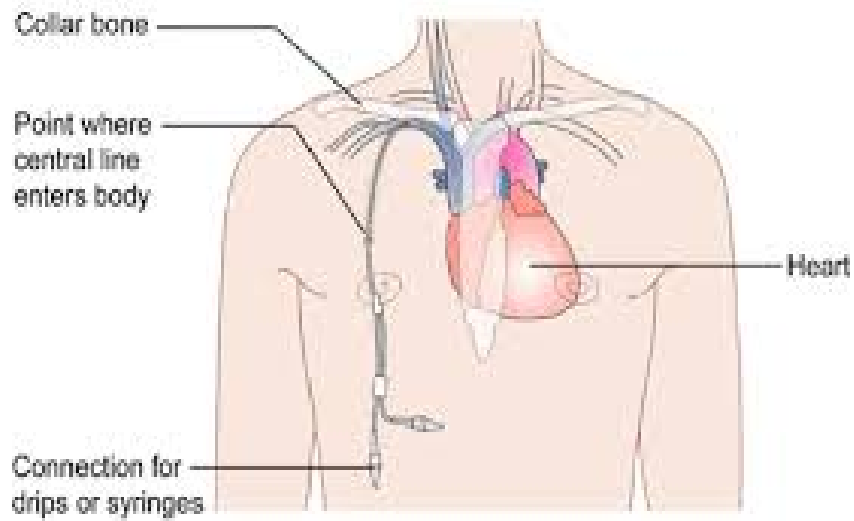
PICC

Peripherally Inserted Central Catheter



CVC

Central Venous Catheter



PORT

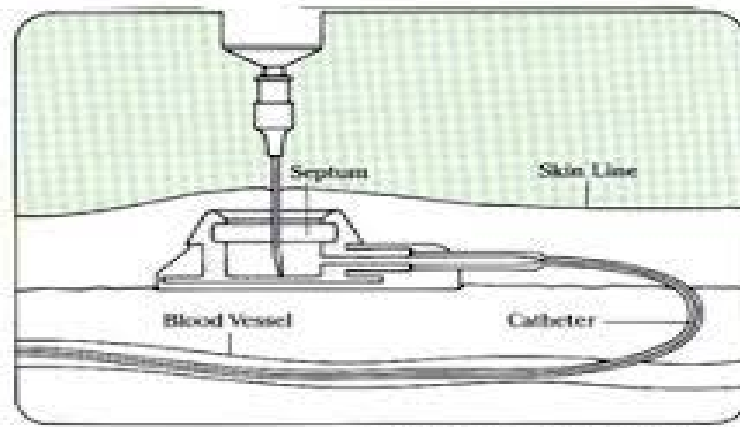


Image from bardaccess.com



"De-needed"



"Needed"

How this affects Solaris volunteers

- Increased risk of infection especially post chemotherapy
- Hand Hygiene
- Pain to touch
- Massage- low platelets
- Patients mood and affect
- Increased risk of infection especially post chemotherapy
- Mindful of invasive devices
- Chemotherapy could be running via CADD pumps
- Spill kits if chemo spill or incontinence
- Excretion via bodily fluids

Alternative therapy

- Discuss with consultant



Websites

- www.cancer.org.au
- <http://www.leukaemia.org.au/>
- <http://www.cancercare.org/>
- <https://www.eviq.org.au/>

Questions?